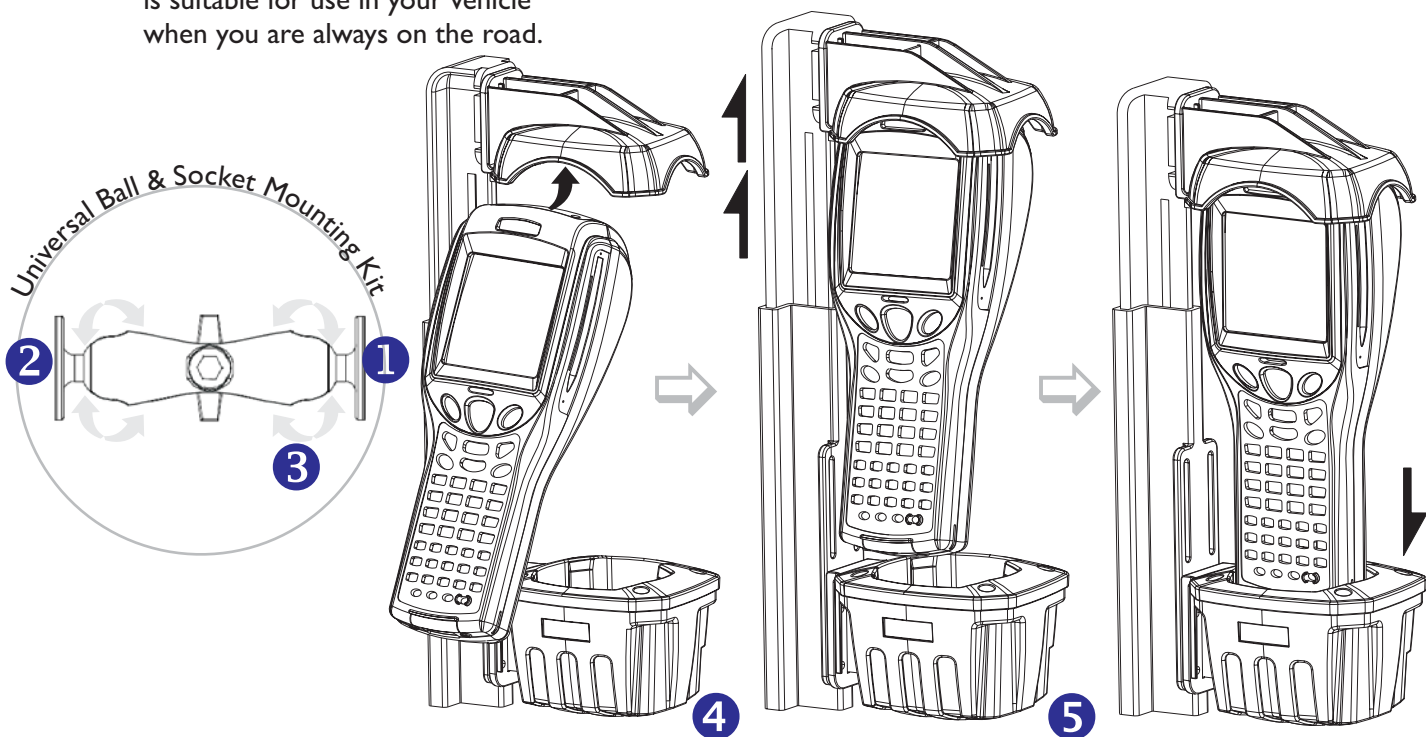


Vehicle Cradle, in conjunction with the mounting kit, is suitable for use in your vehicle when you are always on the road.



Step 1 - Align the holes of the round plate on the cradle to those of the mount base.
Insert bolts through these matching holes.

Screw nuts onto bolts to tighten the joint of the cradle and mount base.

Step 2 - Screw the mount base on the other end to a suitable place in your vehicle.

Step 3 - Adjust the mounting angle by rotating the two ends of the mounting kit.

Step 4 - Hold 8500 firmly and insert it head-first to the adjustable bracket at a proper angle.

Step 5 - Hold 8500 against the adjustable bracket and move it upwards until 8500 can sit in the cradle.



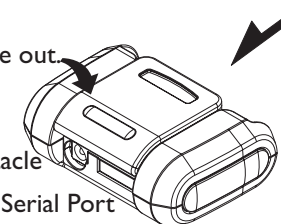
Travel Charger

Slide along matching grooves until 8500 snaps into its place.

Press and slide out.

Power receptacle

Serial Port



Making charging convenient and flexible, Travel Charger is a good traveling companion for your 8500 Mobile Computer.

8500 Vehicle Cradle & Travel Charger

Connecting to Your Laptop

Use the serial cable to connect Vehicle Cradle or Travel Charger to a computer. You may purchase the USB Virtual COM cable (part # 308) to connect to the USB port on your computer. **(B)**

Charging from the Cigarette Lighter

Step 1. Connect the charging cable to the power receptacle **(a)** at the back of Vehicle Cradle.

Step 2. Connect the charging cable to the vehicle's lighter socket. **(A)**

Charging from a 12 Volt DC Power Source

Same as above except for connecting the cable assembly (with in-line fuse holder pre-installed) directly to a +12V DC power source instead of the lighter socket. Follow these instructions. **(B)**

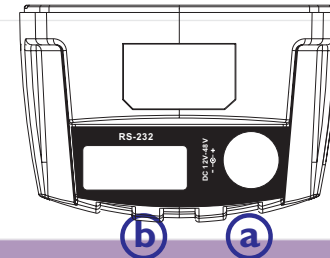
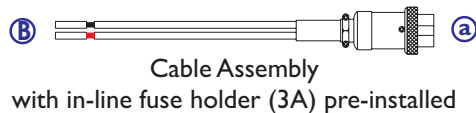
Step 1. Connect the black wire to the vehicle's ground wire.

Step 2. Install the fuse holder to the red wire and connect it to a +12V DC power source.

Warning

Only a qualified technician can perform the car kit power connection. Improper connection may cause damage to the product or vehicle.

For safety concerns, always remove the charging cable from power source when not in use for a long period of time.



Physical Characteristics

Dimensions for Travel Charger (W) 82 mm x (H) 58.8 mm x (D) 32 mm
for Vehicle Cradle (W) 154 mm x (H) 262 mm x (D) 94 mm

Communication Ports Serial port, DB-9 female connector
IR port, software programmable -
38,400 bps (default); 115,200 bps (Max.)

Electrical Characteristics

Operating Power for Travel Charger Output - DC 6V / 3.3A / Input - AC 110/220V
for Vehicle Cradle Output - DC 6V / 2.5A / Input - DC 12 ~ 48V

Electrostatic Discharge ±15 kV air discharge / ±8 kV direct discharge

EMC Regulation CE, FCC, IC, C-Tick (MIC for Travel Charger only)

Environmental Characteristics

Temperature Operating -20°C ~ 80°C / Storage -30°C ~ 90°C

Humidity (non-condensing) Operating 10% ~ 90% / Storage 5% ~ 95%

8500 Vehicle Cradle & Travel Charger