

---

## **Omni Set Virtual COM**

### **Purpose**

The document is aimed to illustrate the procedure for setup the omni-directional scanner interface as Virtual COM mode.

### **Scope**

This document is applicable to [Mica, Libra, Omega+], [Omega, Sirius], [Nova, Pavo, Orion, Pollux and Castor].

### **Requirements**

- Scanner
- PC + MS-Windows + USB Port
- Driver: ScantechIDCDCV2102.inf
- USB Cable
- 12 V Adaptor (for Nova, Pavo and Orion only)

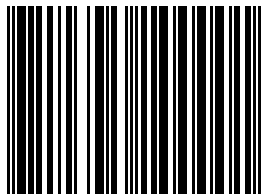
### **Procedure**

Please follow the steps to set Virtual COM.

- Plug the USB cable between PC and scanner.
  - Ensure the USB cable is connected, and then plug the adaptor on scanner if any.
- The scanner will begin to initialize.

-Scan the following labels sequentially to set interface as Virtual COM.

**Open Programming Mode**



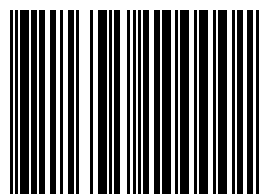
1.1

**USB RS-232 EMULATION**



3.5.4

**Close Programming Mode**

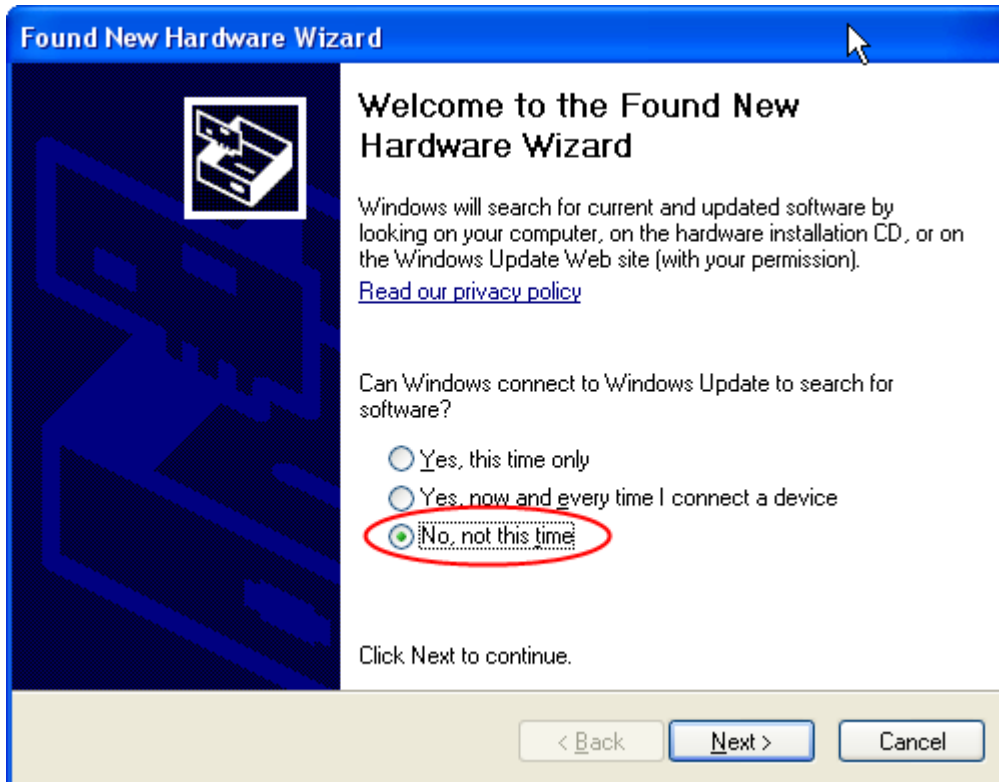


1.1

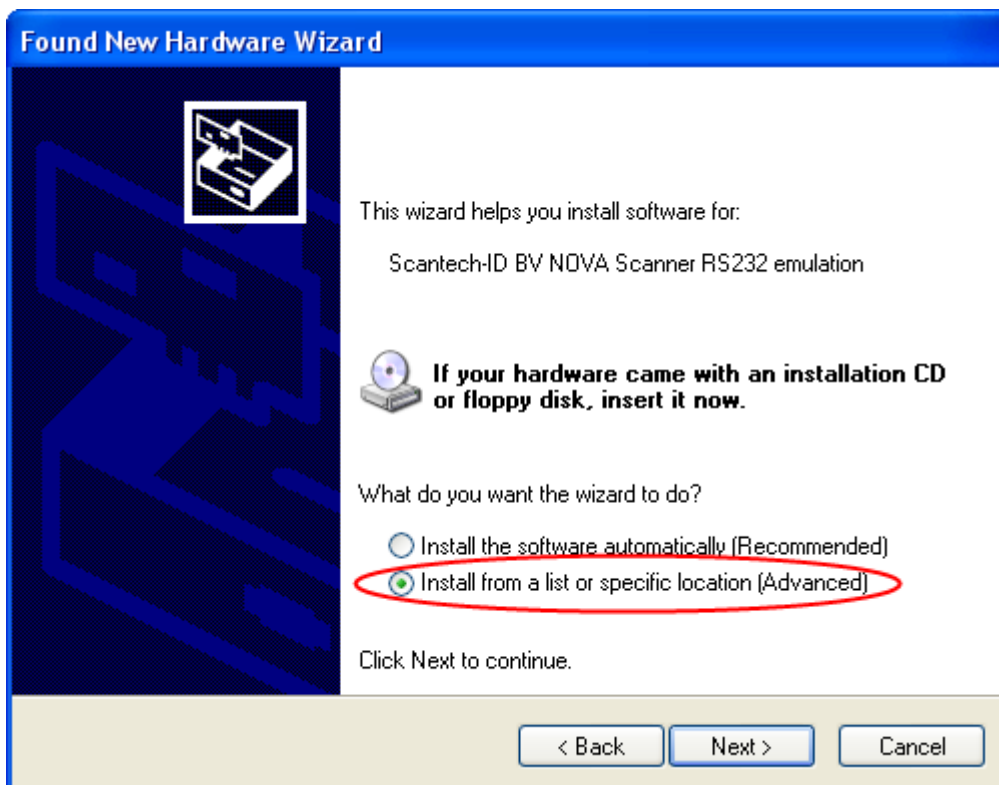
-Afterwards, the Windows will prompt 'Found New Hardware' at the task bar.



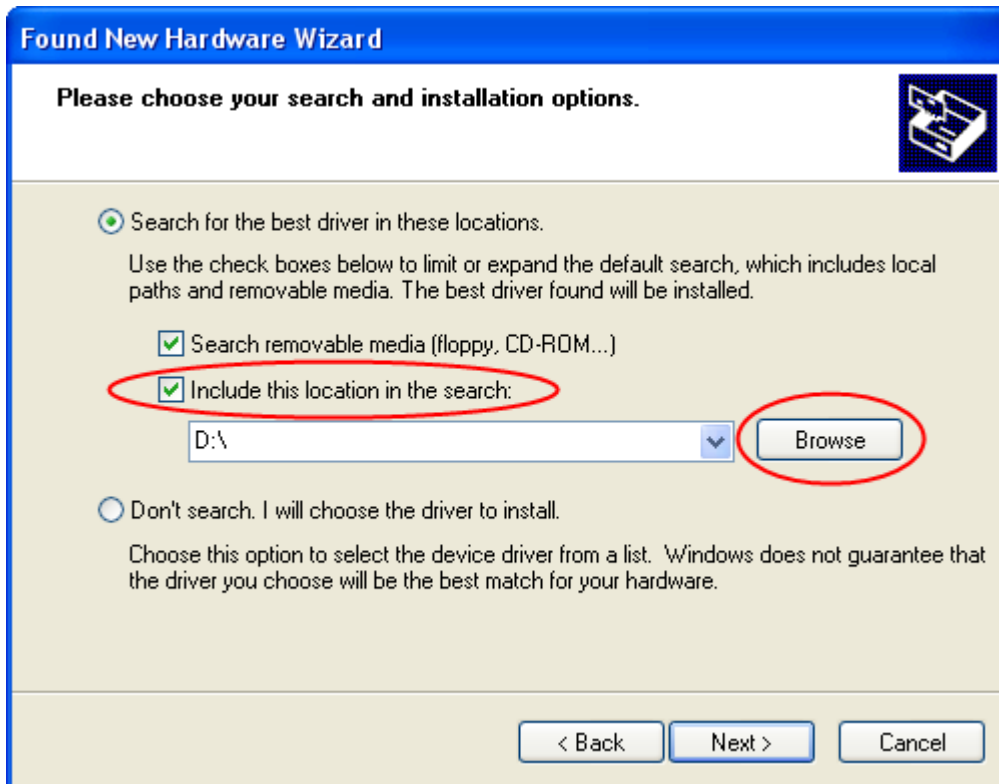
- After a while, 'Found New Hardware Wizard' will show up automatically.
- Select the 3<sup>rd</sup> item. Then click on 'Next' for next step.



- Select the 2<sup>nd</sup> item. Then click on 'Next' for next step.



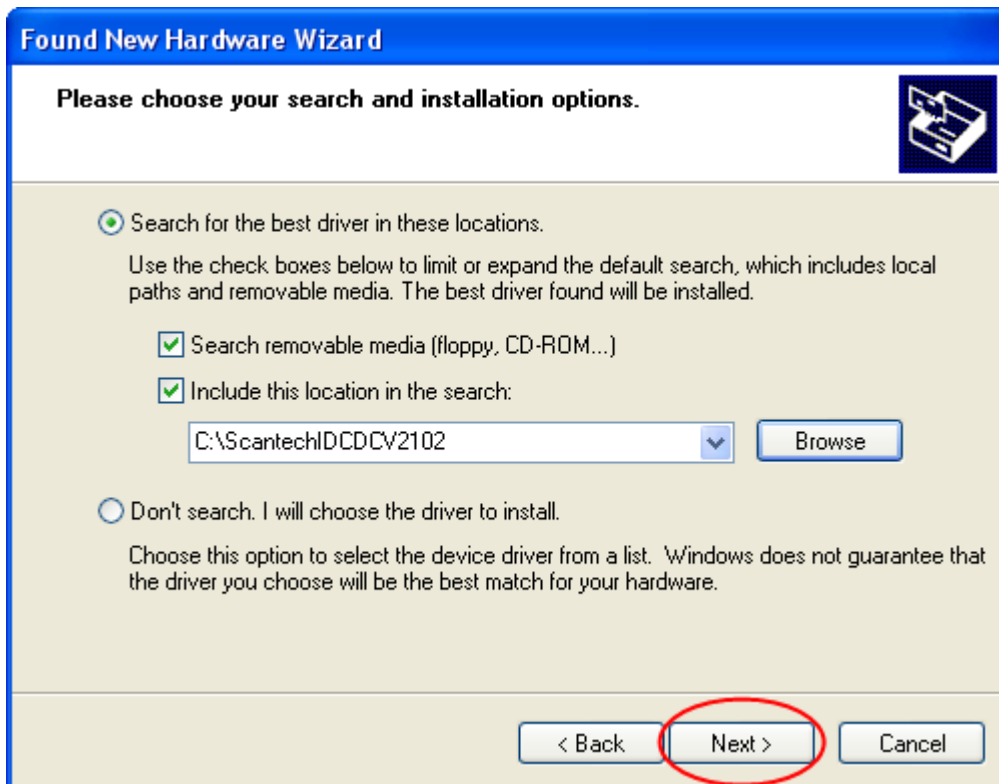
-Tick the 2<sup>nd</sup> selection. Then click on 'Browse'.



-Select the folder where the Virtual COM Driver is saved. Then click on 'OK'.



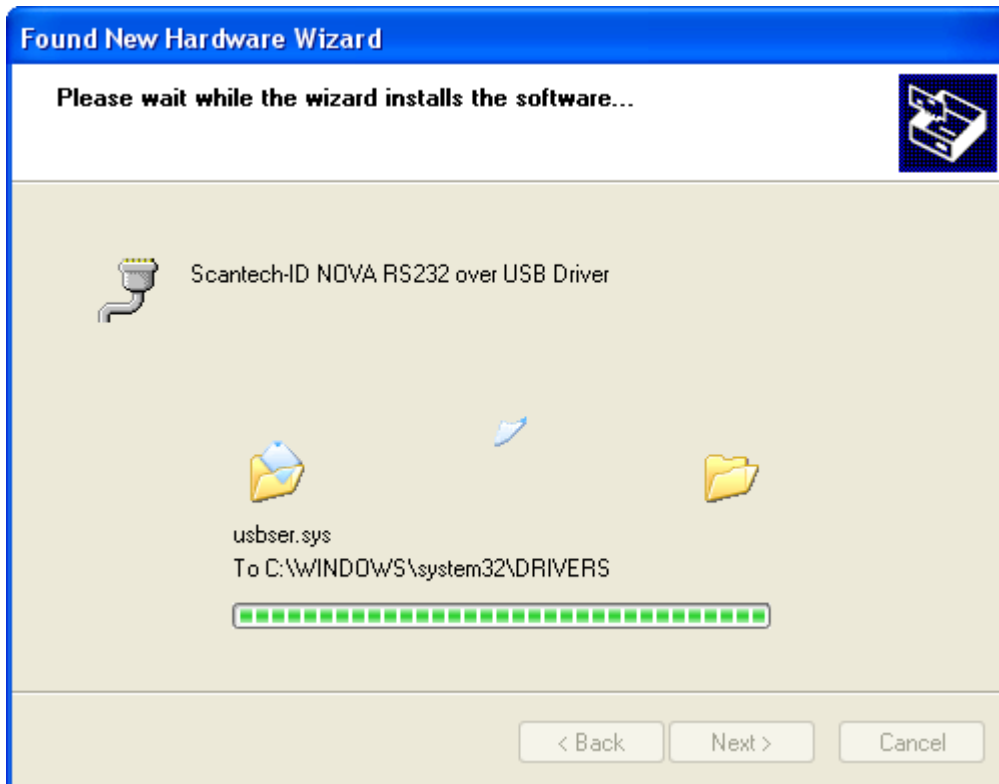
-Click on 'Next' for next step.



-If the OS prompts 'Windows Logo testing', simply click 'Continue Anyway' for installation.



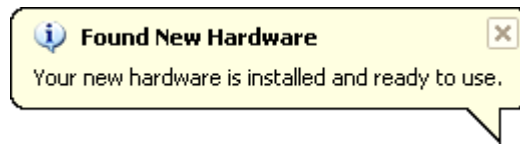
-The wizard will copy Virtual COM driver automatically.



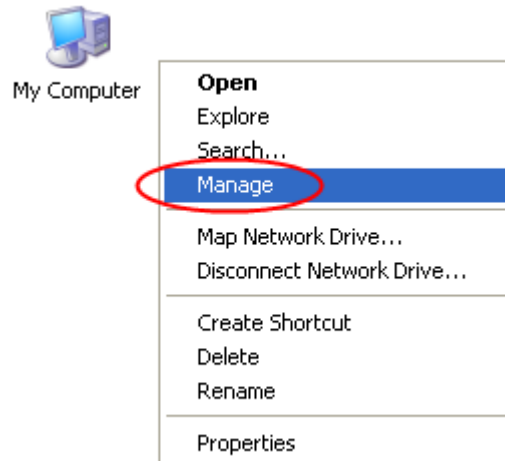
-Click 'Finish' to exit the wizard.



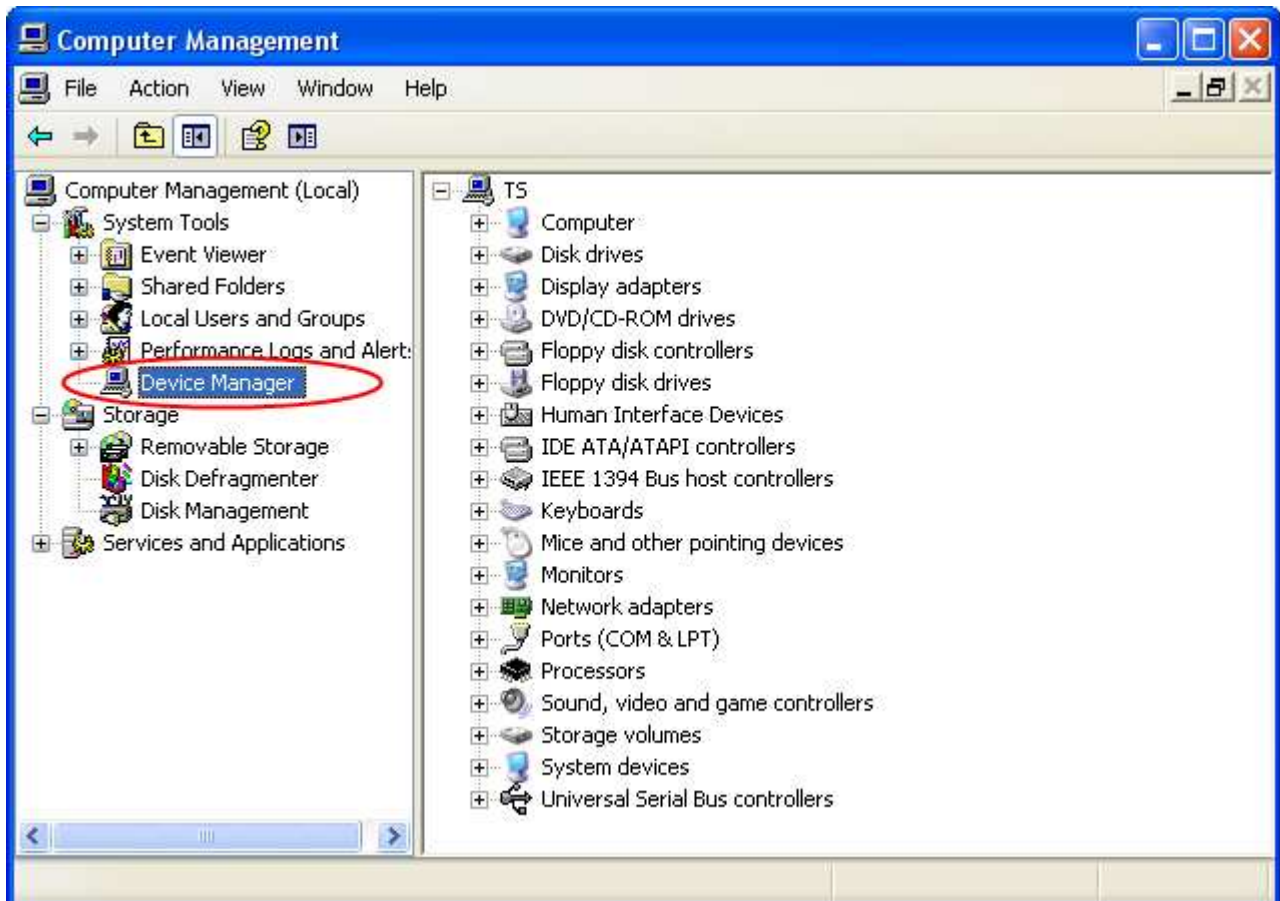
-The message 'Your new hardware is installed and ready to use.' will show up at the task bar to indicate the scanner is installed successfully.



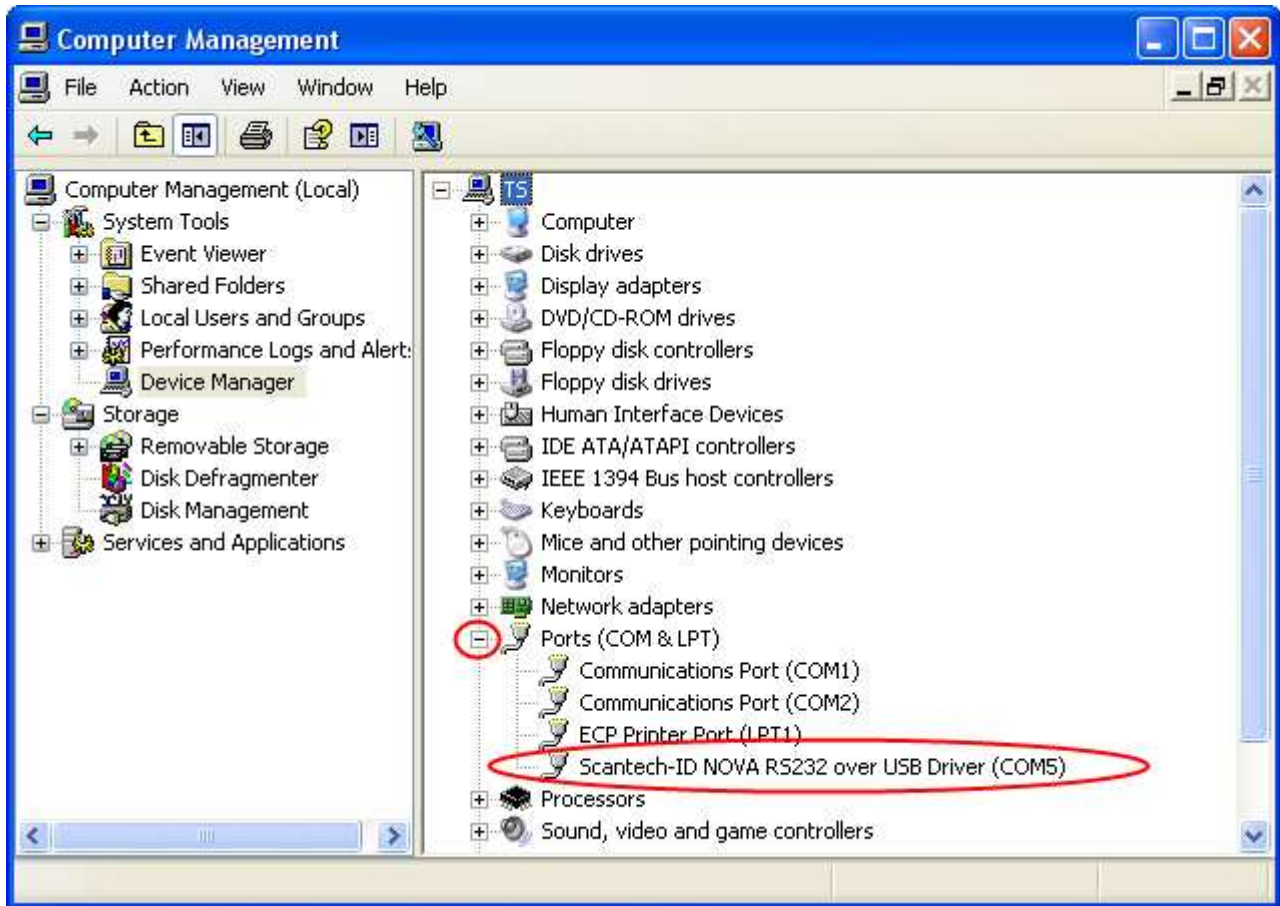
-On the desktop, right-click 'My Computer'. A menu will pop up. Select 'Manage'.



-Click on 'Device Manager'.



- Click the '+' on 'Ports(COM & LPT)'. All the peripherals will show up.
- Check the COM port number on 'Scantech-ID Scanner RS232 over USB Driver'. In this case, the COM port is allocated at COM 5.



- On the RS-232 device or PC, set the following parameters to connect the scanner.
  - COM Port Number (check at the above figure)
  - Baud Rate = 9600
  - Data Bit = 8
  - Stop Bit = 2
  - Parity Check = None
  - Handshaking = None
  - DTR Check = Enable

### Part Number

The following cable part numbers are for reference if required to replace RS-232 cable as USB cable.

- 0114-SM04121 USB cable, 1500mm, for Mica, Libra, Omega+, Omega, Sirius
- 0114-S802121 USB cable, 3000mm, for Nova, Pavo, Orion, Pollux, Castor